



## SHADOW GT SCXS8534TTA4

### SHADOW GT SCXS8534TTA4

The most popular motorsports trailer in America, Shadow GT(tm) is the best looking flat-top auto hauler you can own. Racers from coast-to-coast who want an auto trailer built for the rigors of a long race season choose Shadow GT. Standard features include a wide-body design with six additional inches of interior height for 2008, trailer-rated radial tires on Pace exclusive Enkei aluminum wheels, recessed ramp door with stainless steel swivel handles, polished cast aluminum front corners, LED exterior lighting, and patented dust-proof sidewalls to name a few.

No matter what your trailering need is - from weekend warrior to high mileage professional - when the road is your home, it's a good feeling to know you have Pace quality, support, and resale value behind you. The Shadow Series has earned this top-quality reputation through years of experience. We design, build, and use our trailers so that they work the way racers need them to.

At Pace, we build and support our product with a credible honest, fast and fair 5/3 year warranty to keep you on the road. Contingency sponsorships and TrackSide Service also means we support our customers long after the sale.

If you're looking for the best, follow our Shadow.

### STANDARD FEATURES

- 11 Standard Exterior Colors
- Patented Dust-Proof Sidewall Design for Strength and Cleanliness
- Truck Body Style Flat Top Roof Design
- Body Color Aluminum Wrapped Side Door and Rear Corner Posts
- Tubed Roof Bows w/ 24" On-Center
- Formed Steel Rear Header
- Recessed Ramp Door w/Spring Assist and Flap (4500# Cap.)
- Beavertail for Easy Loading
- Automotive Style D-Bulb Weatherstripping
- Dexter Independent Torsion Suspension (ITS) Axles
- All Wheel Electric Brakes with 12v Breakaway Switch, Including Battery & Trickle Charger
- Trailer Rated Radial Tires
- No-Rust Galvaneal Steel Sidedoor Stepwell
- White Vinyl Ceiling
- 3/8" Plywood Interior Walls
- Heavy-Duty Semi-Style Flat Roof Structure and Construction
- One Piece Seamless Aluminum Roof
- High-Tech Roof Sealant
- 16" On-Center Sidewall Posts
- 16" On-Center Frame Crossmembers
- Chip Resistant Frame Undercoating
- Frames are phosphate power washed and all exposed metal is painted with premium quality paint
- Chip Resistant Undercoating
- Pace Exclusive Motorsport Aluminum Wheels by Enkei
- 3/4" Plywood Floor
- Wide Body Design
- Rust Resistant Galvaneal Rear Crossmember
- Extruded Aluminum Top Rail
- Mirror-Finished Stainless Steel Front Corner Wrap
- 6ft 9in Interior Height w/ 8in I-Beam
- 8" I-Beam Frame (GN/5th wheel)
- Mirror-Finished Rear Corner Posts & Header
- LED 12v Exterior Lighting, including Clear Taillights

And More



The aluminum top rail extrusion is sleek, functional and stronger than other brands.



Modern clear lens exterior LED lighting is part of the GT package and offers a brighter, safer, longer lasting light that takes less voltage to operate.



# SHADOW GT

## SCXS8534TTA4

### SPECIFICATIONS SCXS8534TTA4

Overall Length	38'6"
Interior Length	33'6"
Box Width/OA Width	8'4" /8'6"
Box Height/OA Height	13'5"
Interior Width	8'0" /6'9"
Interior Height (to center of roof bow)	11'0"
Platform Height/Ball Height	24"/22"
Rear Doors	Ramp
Rear Door Width	87-1/2"
Rear Door Height	72"
Axles	6000# Triple
Brakes	Electric
Frame	8" I-Beam
Tire Size	ST235 80R16 LRE
Hitch Ball Size	2-5/16" Flat Nose
Curb Weight	11,560#
Hitch Weight	1156#
Exterior	.050 Smooth
Floor	3/4" Plywood
Sidewalls	3/8" Plywood
Payload Capacity	6440#
GVWR	18,000#
Lower Deck Box Length	N/A
Sidewall Height	N/A
Riser Wall Height	N/A
Attic Interior Height	N/A
Loading Height	N/A

NOTE: All standards, options, special packages, construction and specifications listed are subject to change. Photography may show optional items available at additional cost. Please consult your authorized dealer for the latest product information.

### OPTIONAL EQUIPMENT

- Stacker w/ Hydraulic Car Lift
- Flooring Options
- Side Door Upgrades
- Access & Baggage Doors
- Wheel Upgrades
- Finished Interior Packages Include- White Aluminum Walls, White Vinyl Ceiling, & Choice of Flooring w/ ATP on Ramp Door & Flap
- Custom Interiors
- Extra Height
- Window Options
- Sprint Car Roof
- VHB by 3M Fastenerless Exterior
- Electrical Packages (5 to choose from)
- Shadow Daytona Package
- Spare Tire w/ Mount
- Living Quarter- Lounge and Bathroom Options
- Bathrooms (see dealer for details)
- Hydraulic Brakes
- Air Line
- E-Track: Floor or Wall
- Ladders- Interior or Exterior
- Air Compressor
- Underfloor Fuel Station
- Scissor, Stabilizer or Drop Down Jacks
- AC with or without Heatstrip
- Generator Prep Package
- Carpeted Side Walls
- Finished Partition Wall w/Door
- Insulation- Wall or Ceiling
- Escape Hatch
- Aluminum Door Caddy
- Aluminum Fuel Jug Holder
- Tire Racks & Slick Hangers
- Swing-Up Step
- 12v Winch
- Power Roof Vent
- Fluorescent Lights
- 110v Wiring & Lighting
- Dome Light (SX or LX)
- Black Coin Rubber Floor
- Additional Roof Bows
- Additional Sidewall Posts
- Bogey Wheels

And More

Pace Motorsport aluminum wheels by Enkei and extruded aluminum fenders are Pace exclusives and differentiate your Shadow GT from the competition.



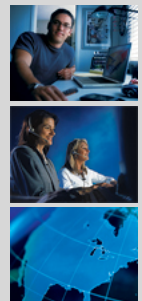
Polished stainless steel swivel handles and recessed rear ramp door are standard equipment on the Shadow GT. They are the most trick in the industry.



PACE TRAILERS ARE DESIGNED AND BUILT FROM THE GROUND UP BY PROFESSIONALS WHO ACTUALLY USE TRAILERS.

CUSTOMER SERVICE HOTLINE IS JUST ONE OF MANY WAYS PACE SUPPORTS YOU AFTER THE SALE. CALL US AT 800-247-5767 ANYTIME.

FRIENDLY DEALERS FROM COAST-TO-COAST MEANS YOU'LL NEVER BE STRANDED WHEN YOU CHOOSE PACE.



Your Closest Authorized Pace American Dealer:

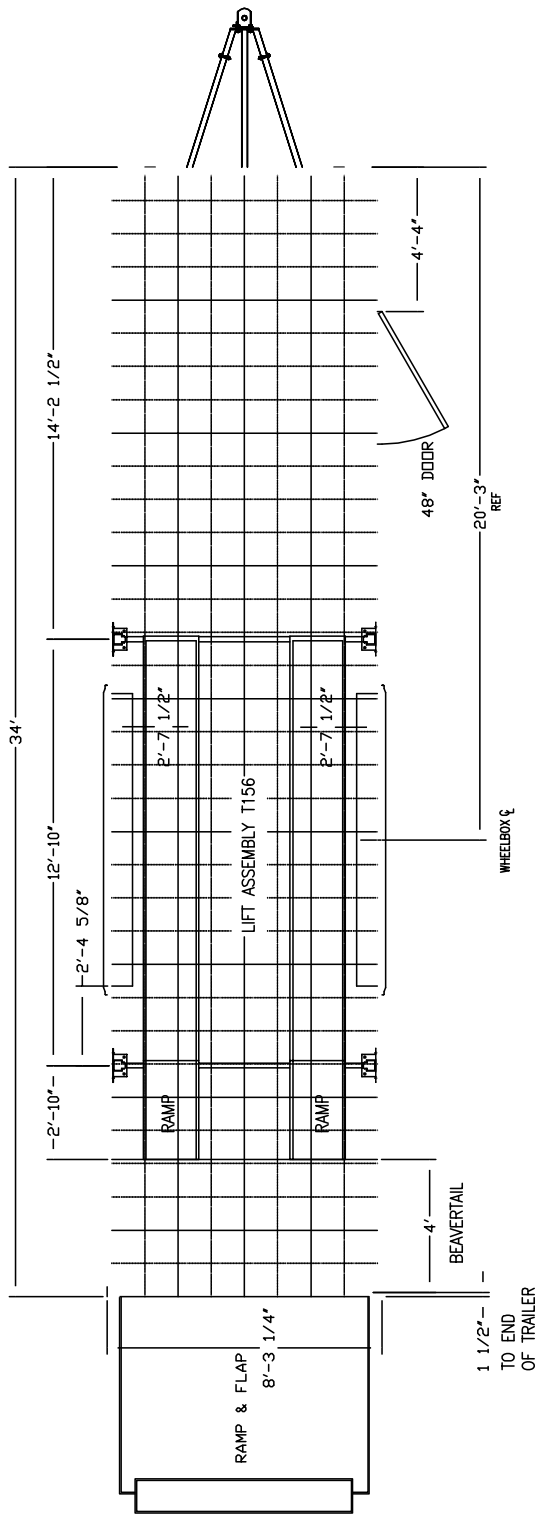
Find your nearest Pace American dealer at <http://www.paceamerican.com/find/>

paceamerican.com 800.247.5767

**SHADOW GT** SCXS8534TTA4

# FLOORPLAN PLAYGROUND

DATE: \_\_\_\_\_ TITLE: PLAN VIEW MODEL: SCS 8534TTA4 DWG NO: \_\_\_\_\_



11550 HARTER DRIVE  
MIDDLEBURY, IN. 46540  
SCALE: N.T.S. APPROVED BY: \_\_\_\_\_ DWG. BY: RAM  
REVISED: \_\_\_\_\_

NOTES:  
GRID=12" x 12" SQUARES

REV. #	DATE	DESCRIPTION

PAGE AMERICAN CLAIMS PROPRIETARY RIGHTS TO THE MATERIAL DISCLOSED HEREIN. NEITHER THIS DRAWING NOR ANY REPRODUCTION THEREOF MAY BE USED TO MANUFACTURE ANYTHING WITHOUT PERMISSION IN WRITING.